



THE AUTOMOTIVE LIGHTING BENCHMARK

15-17 F150 XB LED HEADLIGHTS INSTALL GUIDE

WARNING: By reading this document, you agree it is only to be used as an educational guide. Morimoto Lighting nor its dealers make guarantees on any finished results, nor are they to be held responsible for any damage, misuse, or personal injuries. If you are unable to clearly understand and adapt the information below, professional installation is recommended.

PACKAGE CONTENTS



2X HEADLIGHT ASSEMBLIES



1X FUSE TAP / DRL HARNESS

IMPORTANT: If your vehicle is equipped with anything but OEM turn signals (full assemblies, LED bulbs, or otherwise) in the tail lights or elsewhere: You may experience a hyper flash and/or problem with the sequential signal setting on these headlights. This is not a defect in the headlight, and caused by un-matched impedance with your original vehicle settings.

OEM HALOGEN TRUCKS

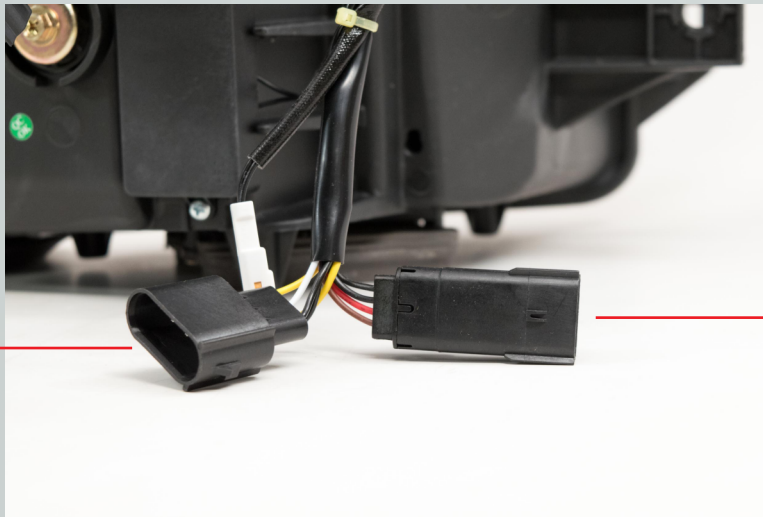
PROCEED TO PAGE 2

OEM LED TRUCKS

SKIP TO PAGE 3

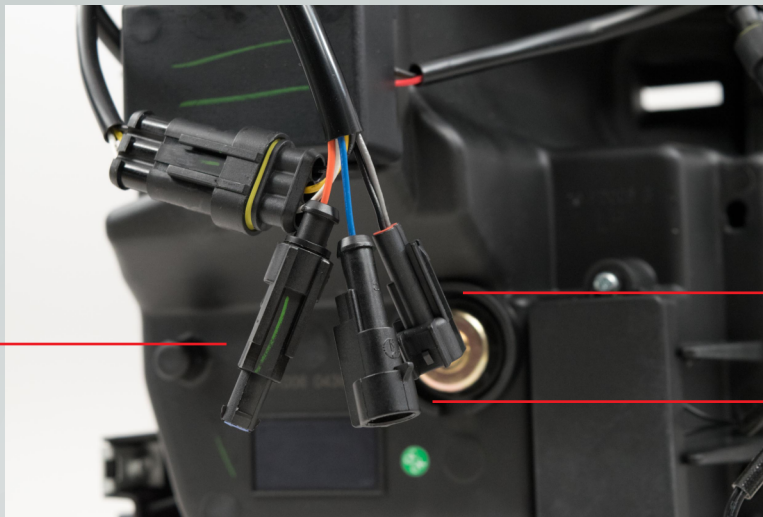
CONNECTOR IDENTIFICATION FOR OEM HALOGEN TRUCKS ONLY

PARKING LIGHT
& TURN SIGNAL



HIGH BEAM &
LOW BEAM

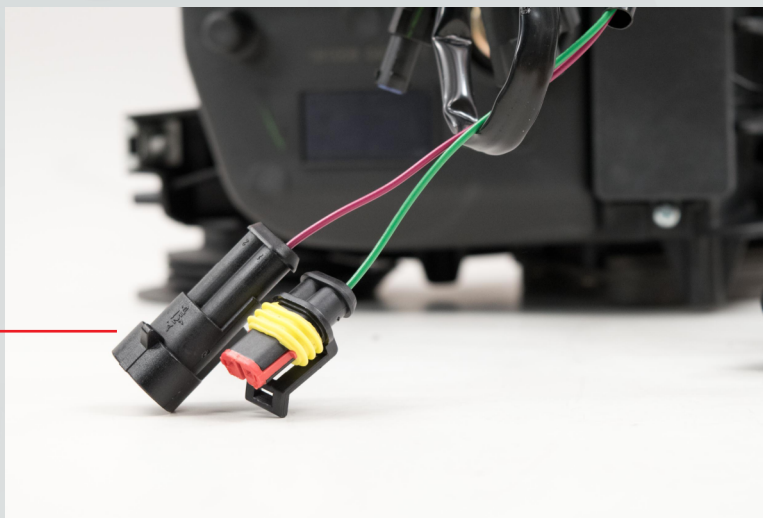
NOT USED



SIDEMARKER
LIGHT

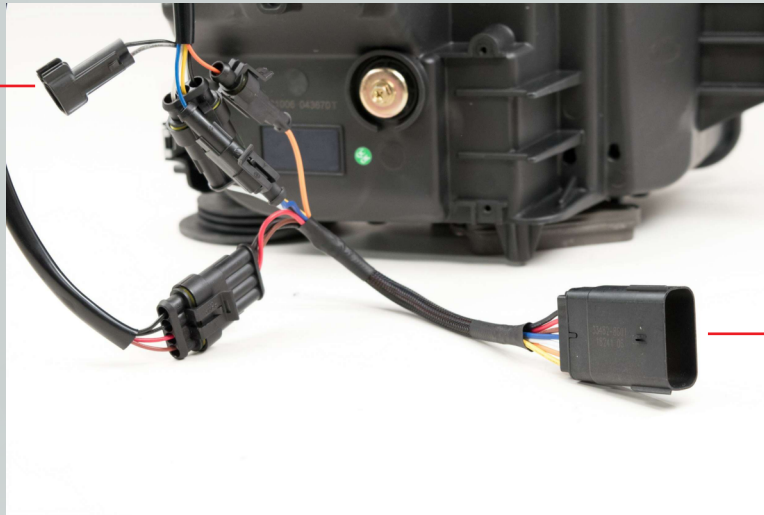
DRL HARNESS
INPUT

SEQUENTIAL
TURN SIGNAL
TOGGLE



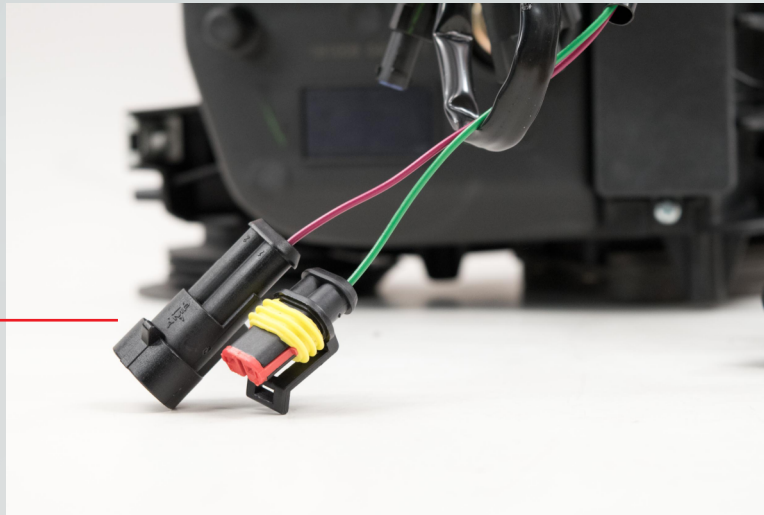
CONNECTOR IDENTIFICATION FOR OEM LED TRUCKS ONLY

DRL HARNESS
INPUT



INPUT

SEQUENTIAL
TURN SIGNAL
TOGGLE

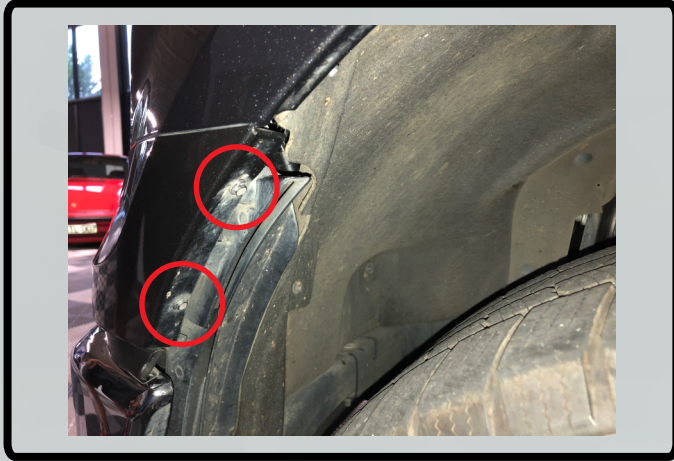


*TIP FOR EASIER AIMING

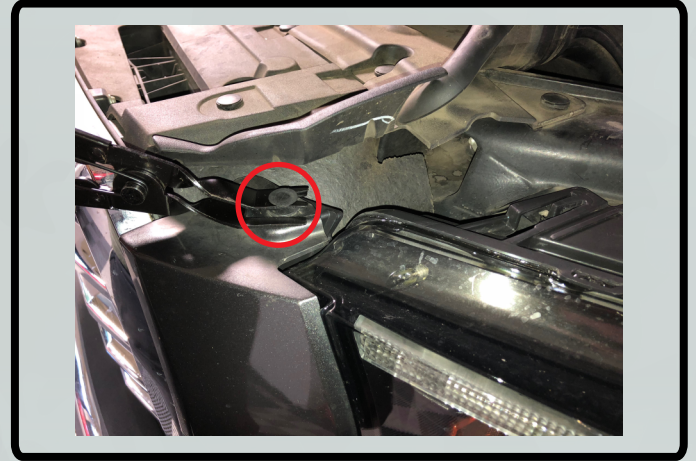
Before removing stock headlight, park your truck somewhere where you can shine the stock headlight on a wall and mark the top edge of the original beam with a small piece of masking tape. Do not move truck until new lights are aimed and installed.

INSTALLATION PROCESS

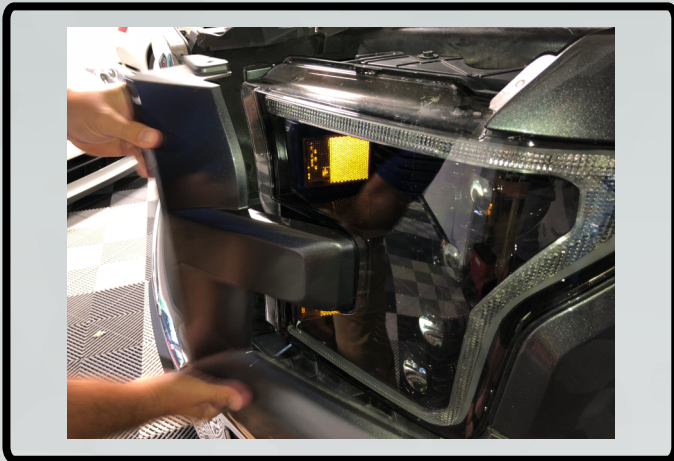
1. Remove two 7mm bolts from inside each wheelwell holding the fender flares on.



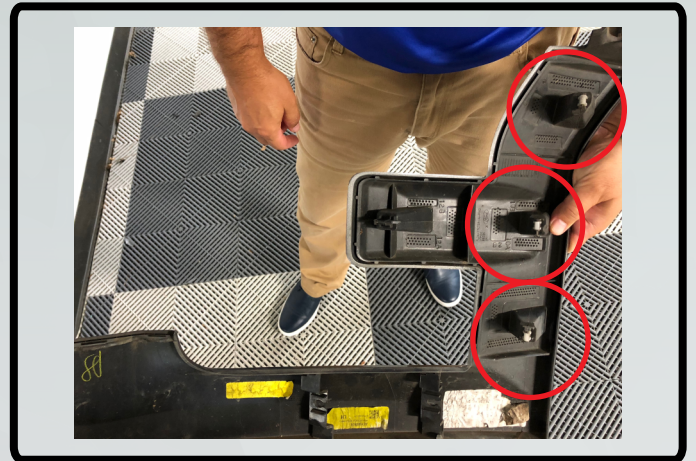
2. Remove plastic push clip from top of headlight trim panel.



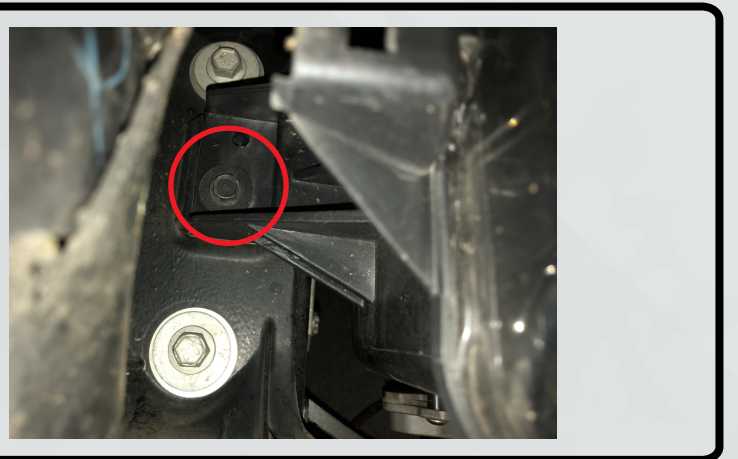
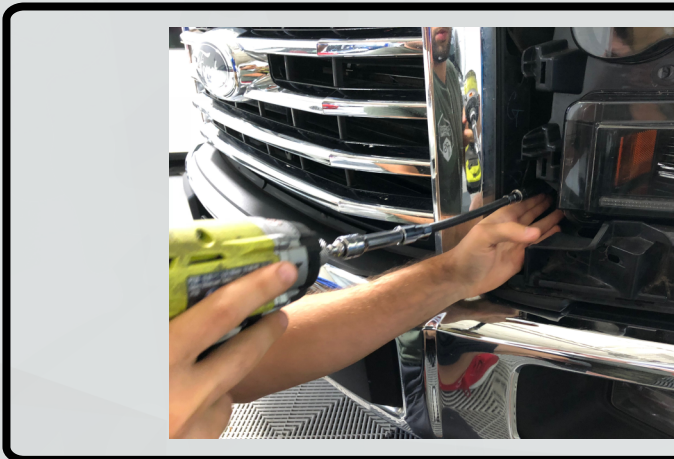
3. Carefully pull the headlight panel trim pieces forward. Note: Step Four shows the three press-clips that retain it.



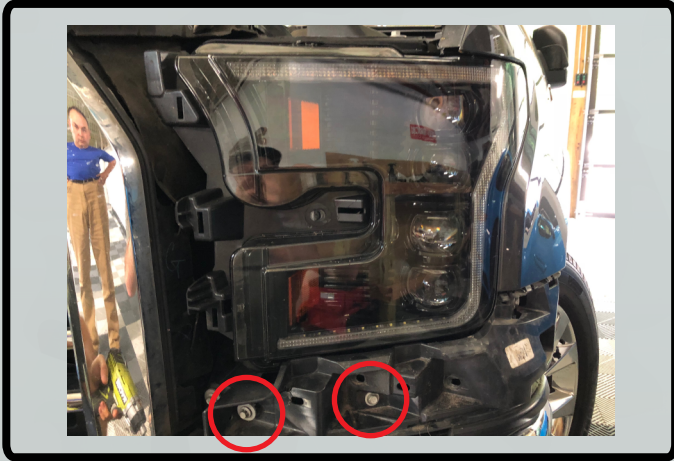
4. Three press-clips circled below.



5. Using a long extension and 10mm socket, remove the hidden bolt shown below.



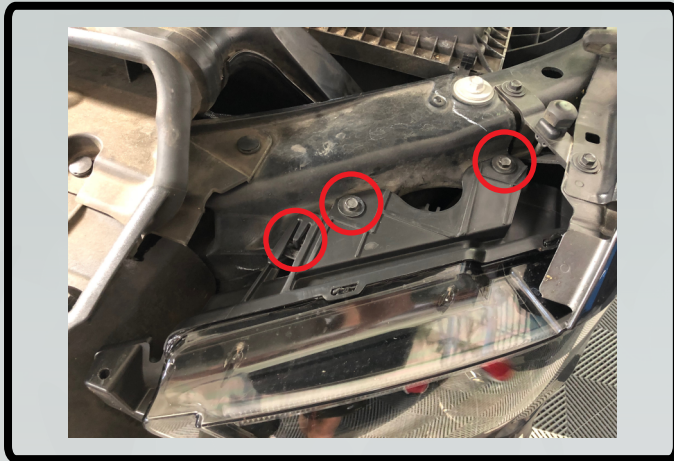
6. Remove 8mm and 10mm bolts circled below.



7. Remove 10mm bolts circled below.



8. Remove two 10mm bolts circled below from top of the headlight. The third circled piece is a "finger" clip that needs to be released by gently prying upward with a flathead screwdriver.



9. Using needlenose pliers, squeeze the clip on the side of the bracket to release it from the fender.



10. Gently remove the bracket by pulling away from the fender.



11. Be mindful of 90 degree tabs on the side and two on the bottom in front



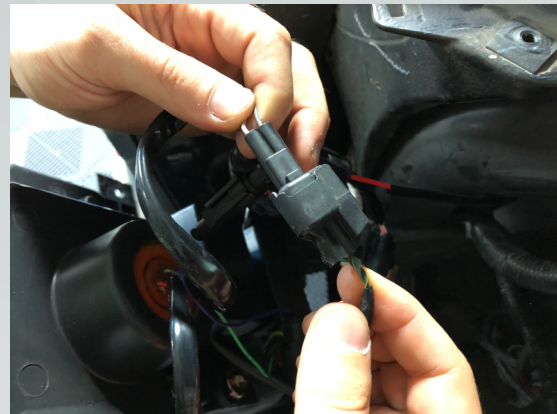
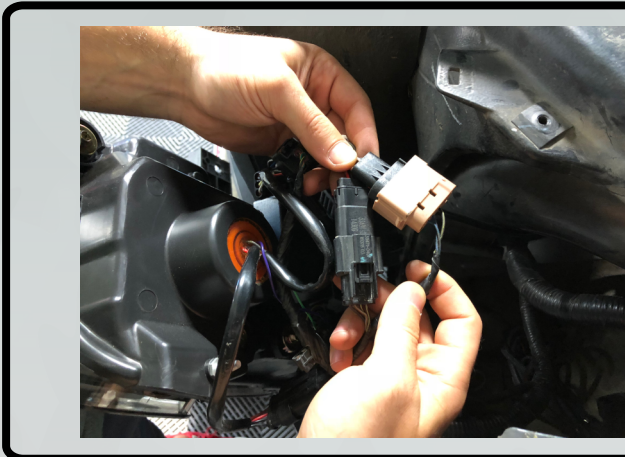
12. Gently remove housings from vehicle.



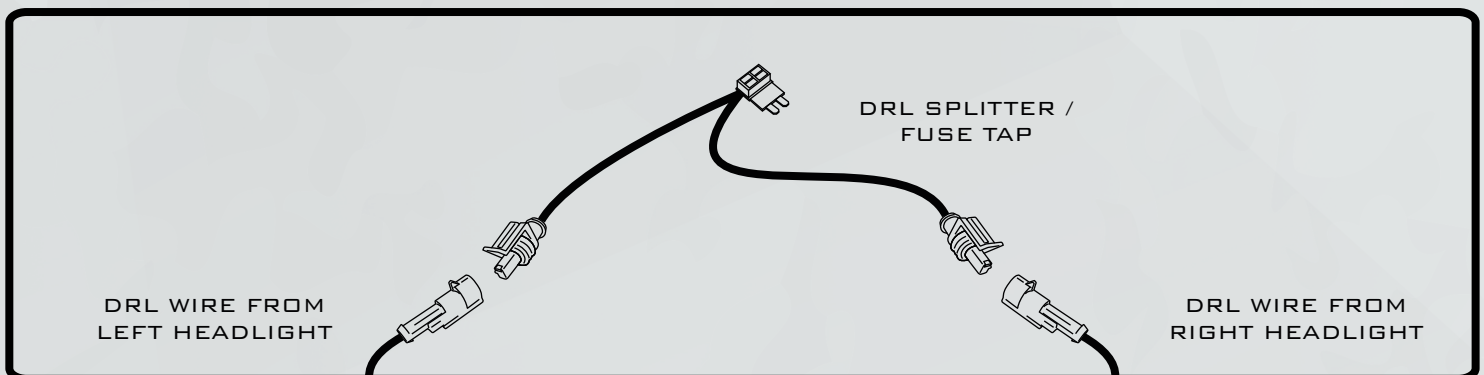
13. Remove three T25 torx screws holding bracket to the bottom of the OEM light and transfer this bracket to the Morimoto headlights. Tighten until snug.



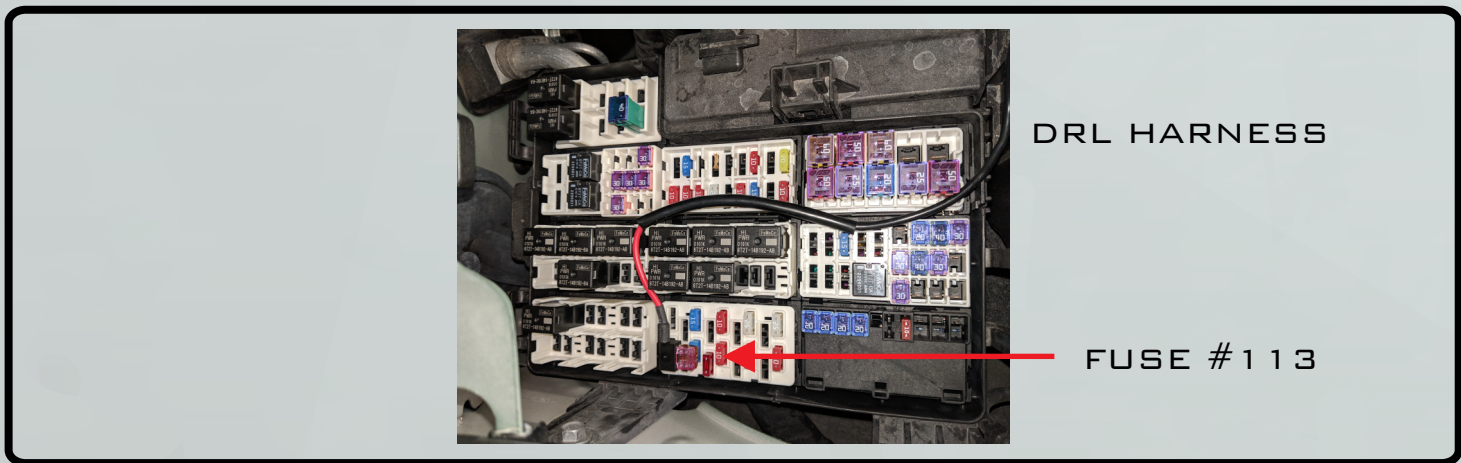
14. Connect stock headlight connectors to the Morimoto headlights. Refer to page 2 or 3 for identification.



15. Plug in DRL leads to each headlight's DRL plug



16. Route the DRL “Y-Harness” across the top of the radiator support and the fuse tap to the fusebox.



17. Configure the turn signal wiring to your preference:



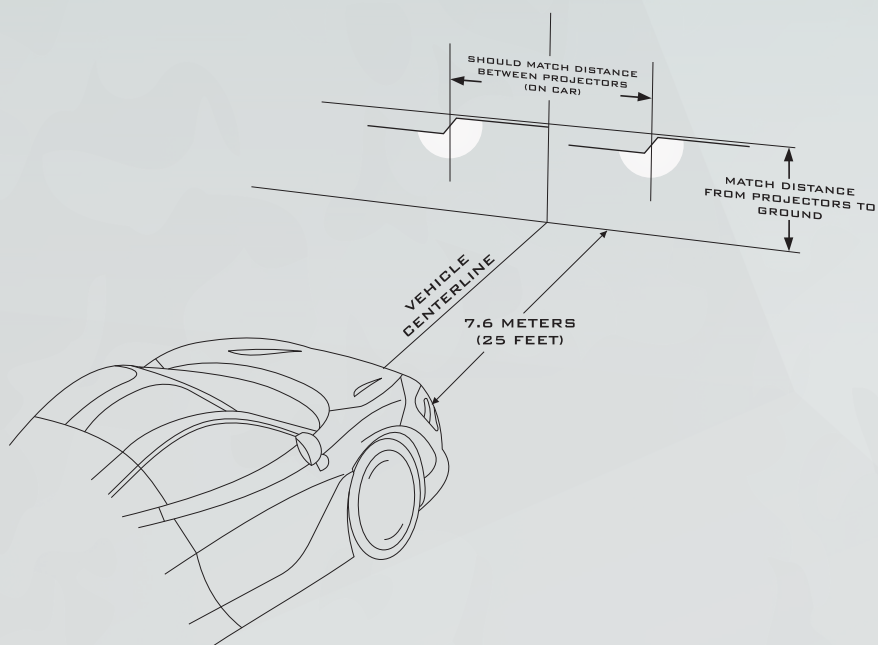
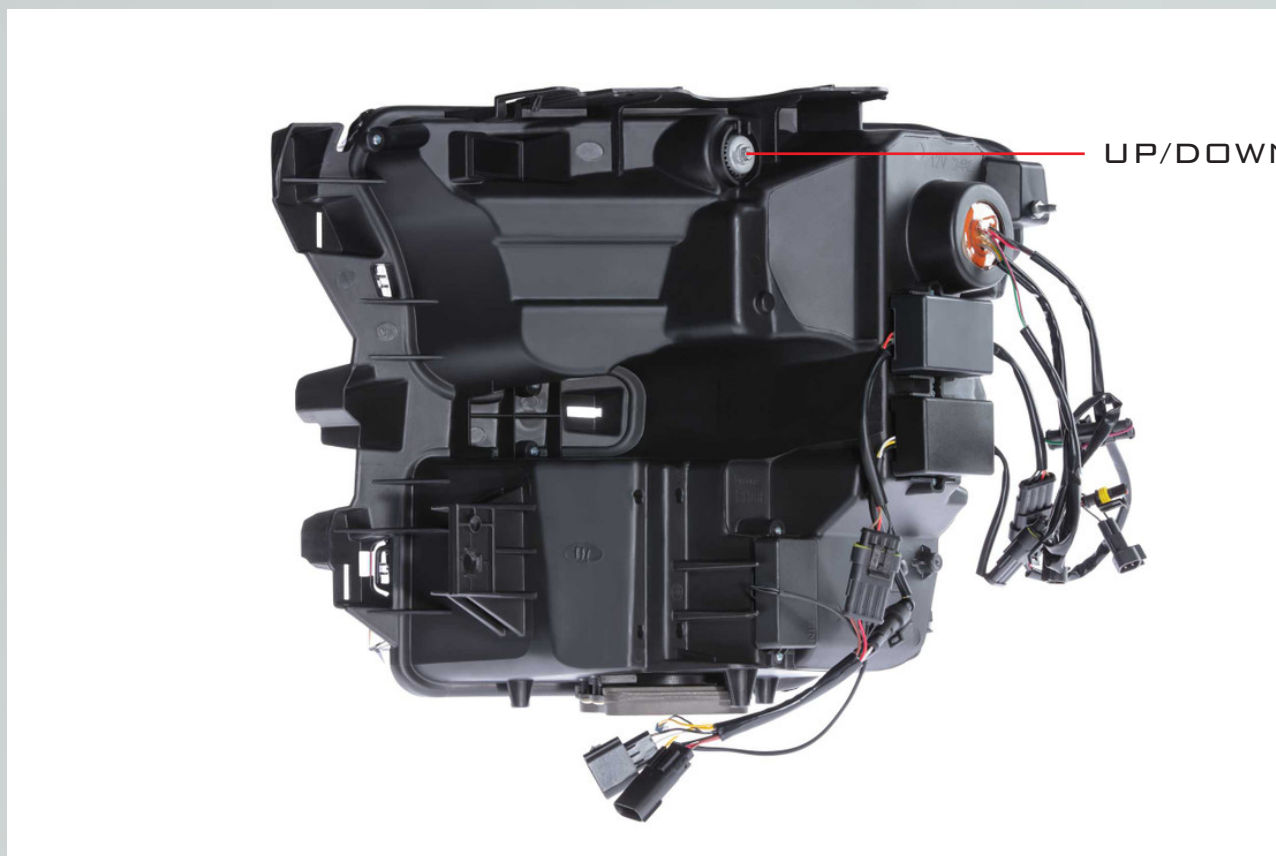
18. Test all functions of lights before bolting them on to the truck. We recommend leaving the lights on for five minutes with the truck's engine running. Certain functions require the capacitors to have a charge which naturally takes a short amount of time.

Normal operation is as follows:

- Parking lights: dim DRL outline and amber sidemarker turned on
- Daytime Running Light: full intensity on white (or amber) outline
- Low Beam: dim DRL outline, amber sidemarker, and top two projectors turned on
- High Beam: dim DRL outline, amber sidemarker, and all four projectors turned on
- Auto Function: functions as normal

If any functions do not work, we recommend contacting your Morimoto dealer for troubleshooting.

19. Aiming: Please refer to the aiming standards below and be sure to adjust the headlights prior to completely re-assembling the truck.



20. If everything works as expected, proceed to re-install lights and cover pieces.

Re-assembly / Installation is reverse of removal.

-END-